

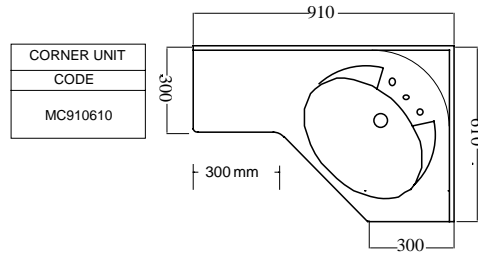
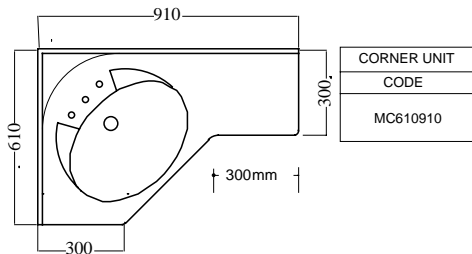
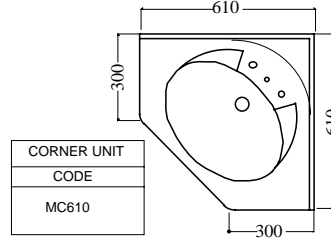
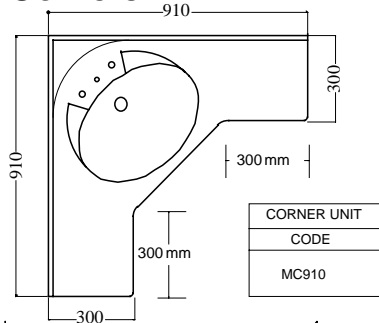


# MANOOGA PRODUCTS

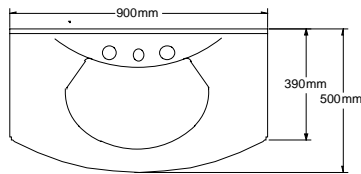
*The Vanity Top Specialist*

Sheet No. 052005CEO

## Corners

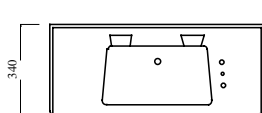


## Curved Front

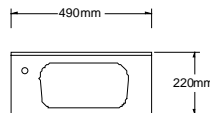


Curved Front Top	
Size	Code
900mm x 500mm	CF900

## Ensuites



PRINCE		
LENGTH		CODE
NOMINAL	ACTUAL	
600mm	596mm	P600
750mm	755mm	P750
Available R/H & L/H Taps		



ELF		
LENGTH		CODE
NOMINAL	ACTUAL	
490mm	492mm	ELF
Available R/H & L/H Tap		

For Photos & Specifications - [www.manooga.com.au](http://www.manooga.com.au)

**MANOOGA PRODUCTS PTY. LTD.**

13 RHODES STREET, WEST RYDE. 2114 - PHONE (02) 9807 3511 FAX (02) 9808 1897